

DCM Workshop Session 1

Muslin Preparation Instructions



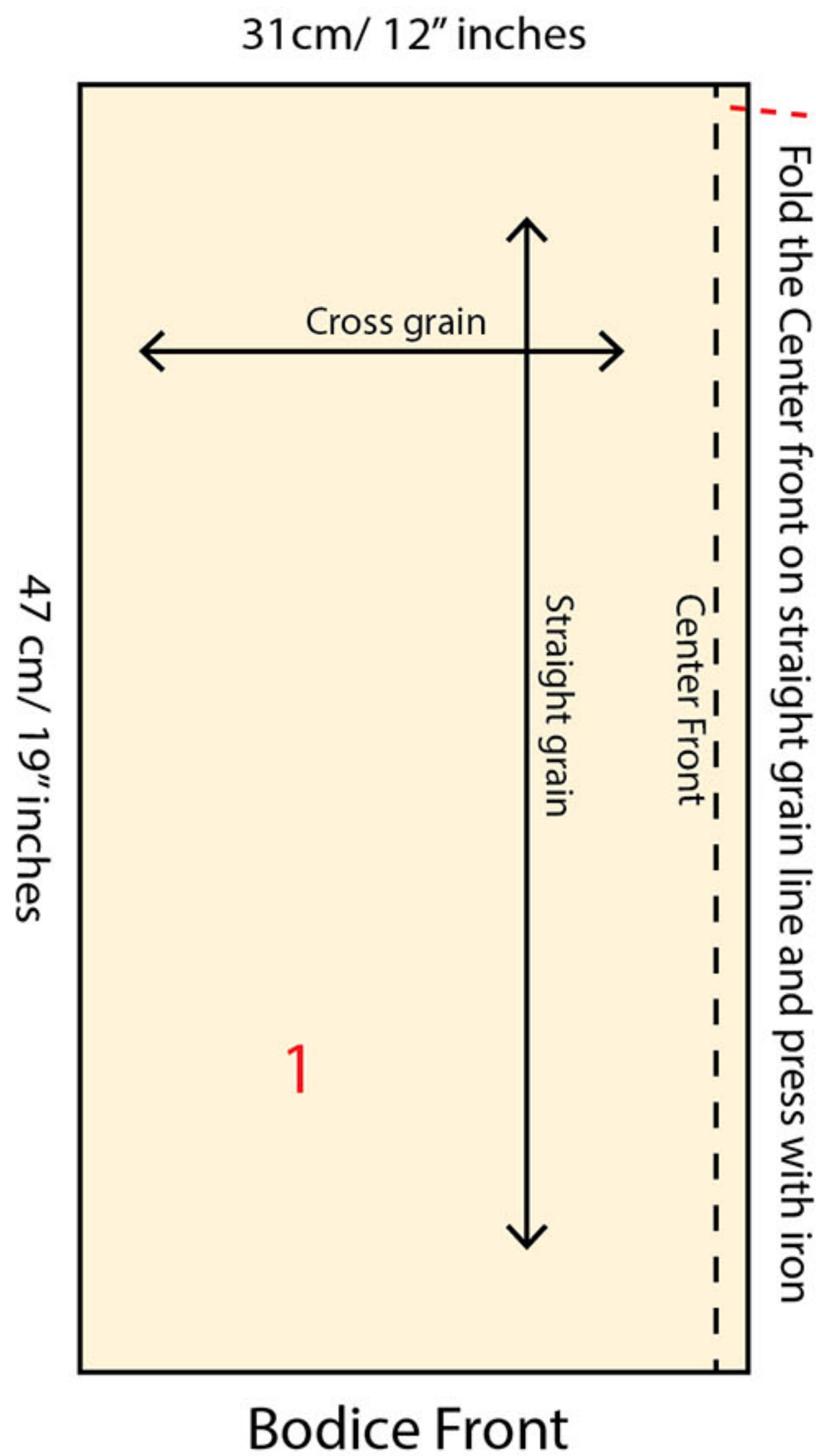
Tips:

We only need to use one side of the dress form in order to drape a symmetrical design. Later we can take each draped piece separately on paper and transfer into a pattern. After truing we can cut double for each section.

I prepared my patterns using the right side of my dress form, because I am left handed and it was easier for me. You can use the right or the left side of the dress form, and follow to back piece. But side pieces need to be attached on the side seam.

DCM Workshop Session 1

Muslin Preparation Instructions



The Center Front should be on Straight grain and fold 1/2" or 2cm in, and press with iron

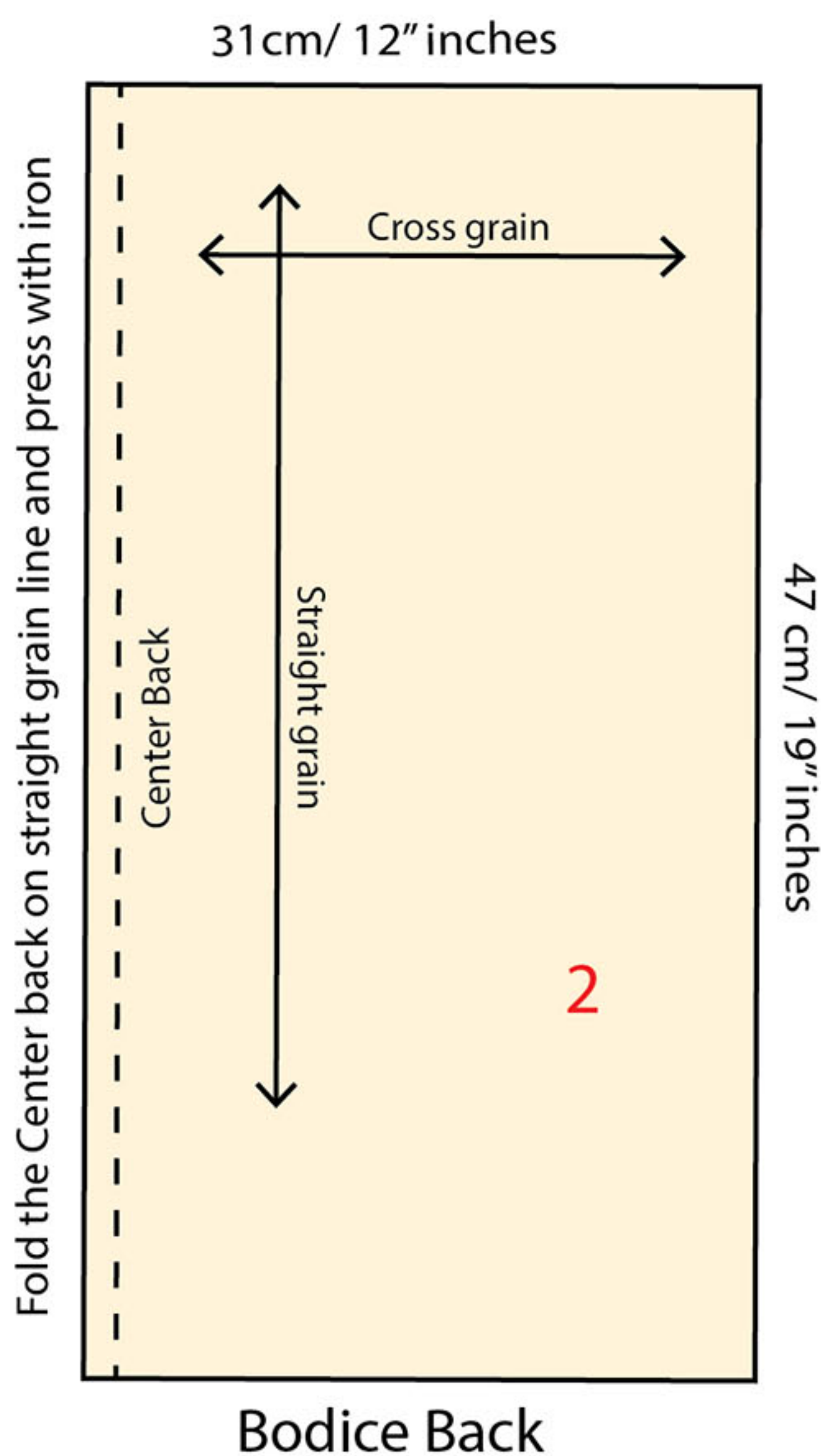
P.S.

You only need to use fold straight grain on the Center Front and the Center Back lines, if you are draping a symmetrical design.

Tips:

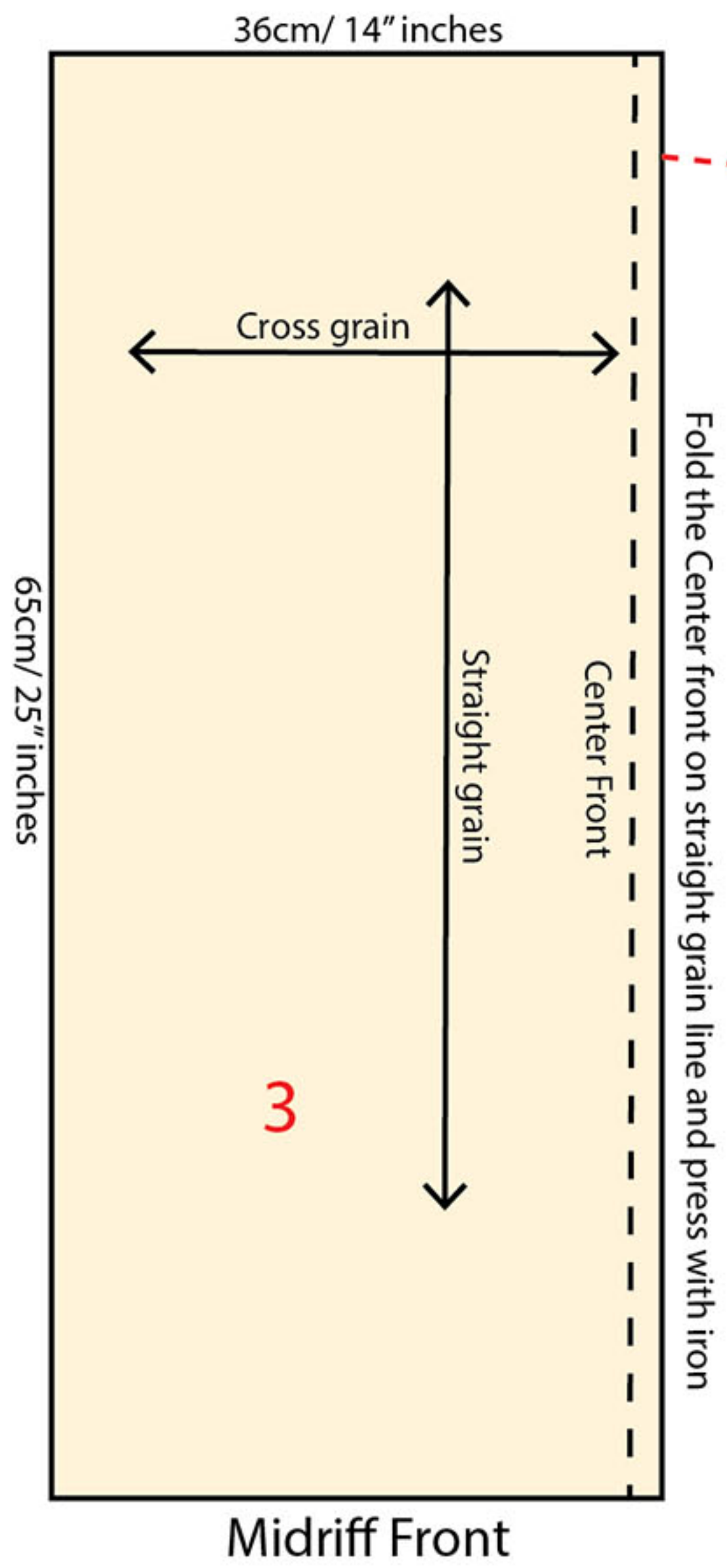
These measurements are according to my dress form (which is size 6 standard dress form) and the design is applied with my draping tape.

I always recommend checking out your sections and lines measurement, and add 5 to 10cm / 2" to 3" to your muslin length or width to cover your taped sections.



DCM Workshop Session 1

Muslin Preparation Instructions

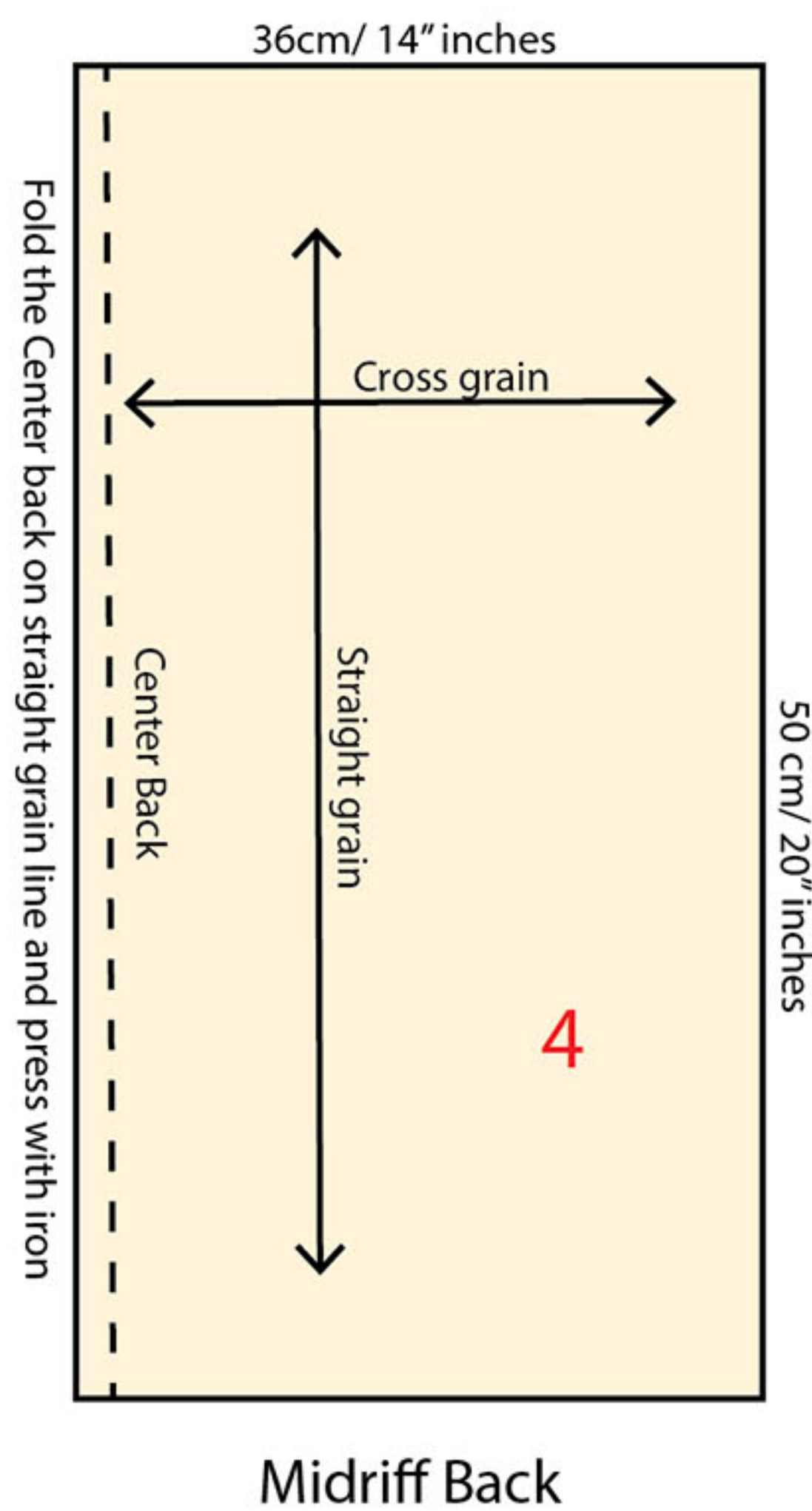


→ The Center Front should be on Straight grain and fold 1/2" or 2cm in, and press with iron

P.S.

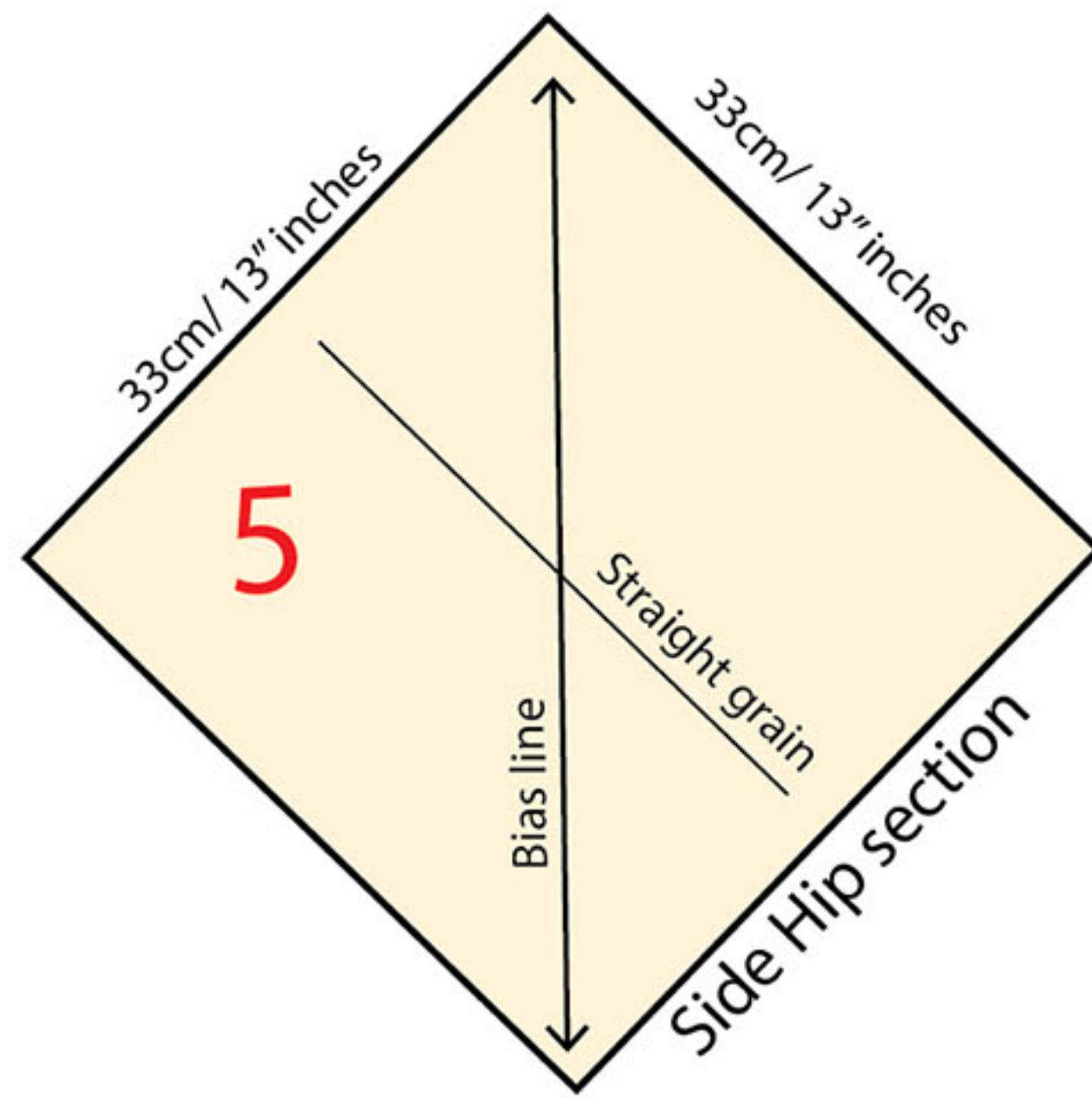
You only need to use fold straight grain on the Center Front and the Center Back lines, if you are draping a symmetrical design.

On your dress form, measure the length from the highest point of the midriff section to the hem (Before that, decide on length of your skirt and where the hem of your dress going to be), and add 2 more inches.



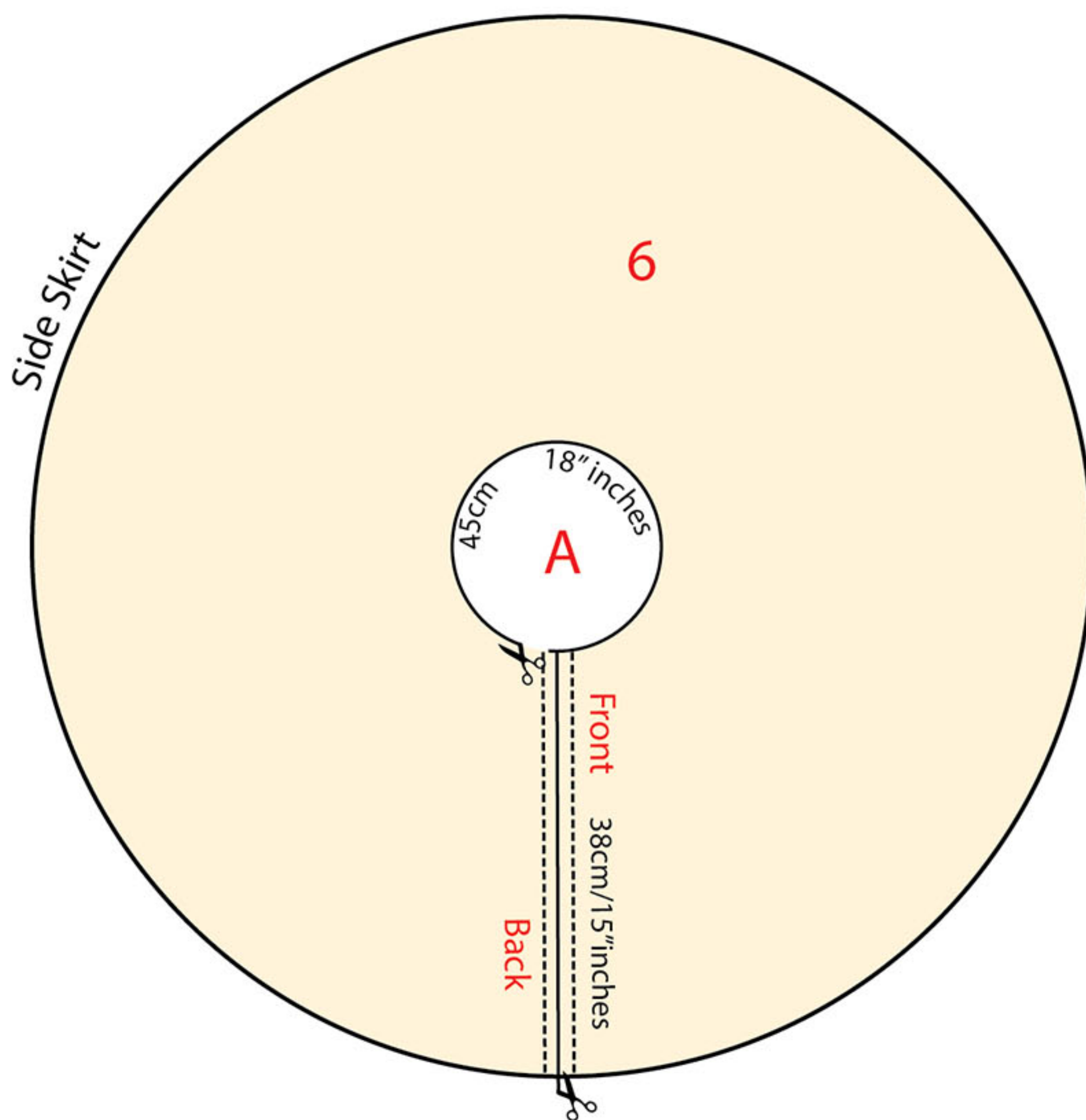
DCM Workshop Session 1

Muslin Preparation Instructions

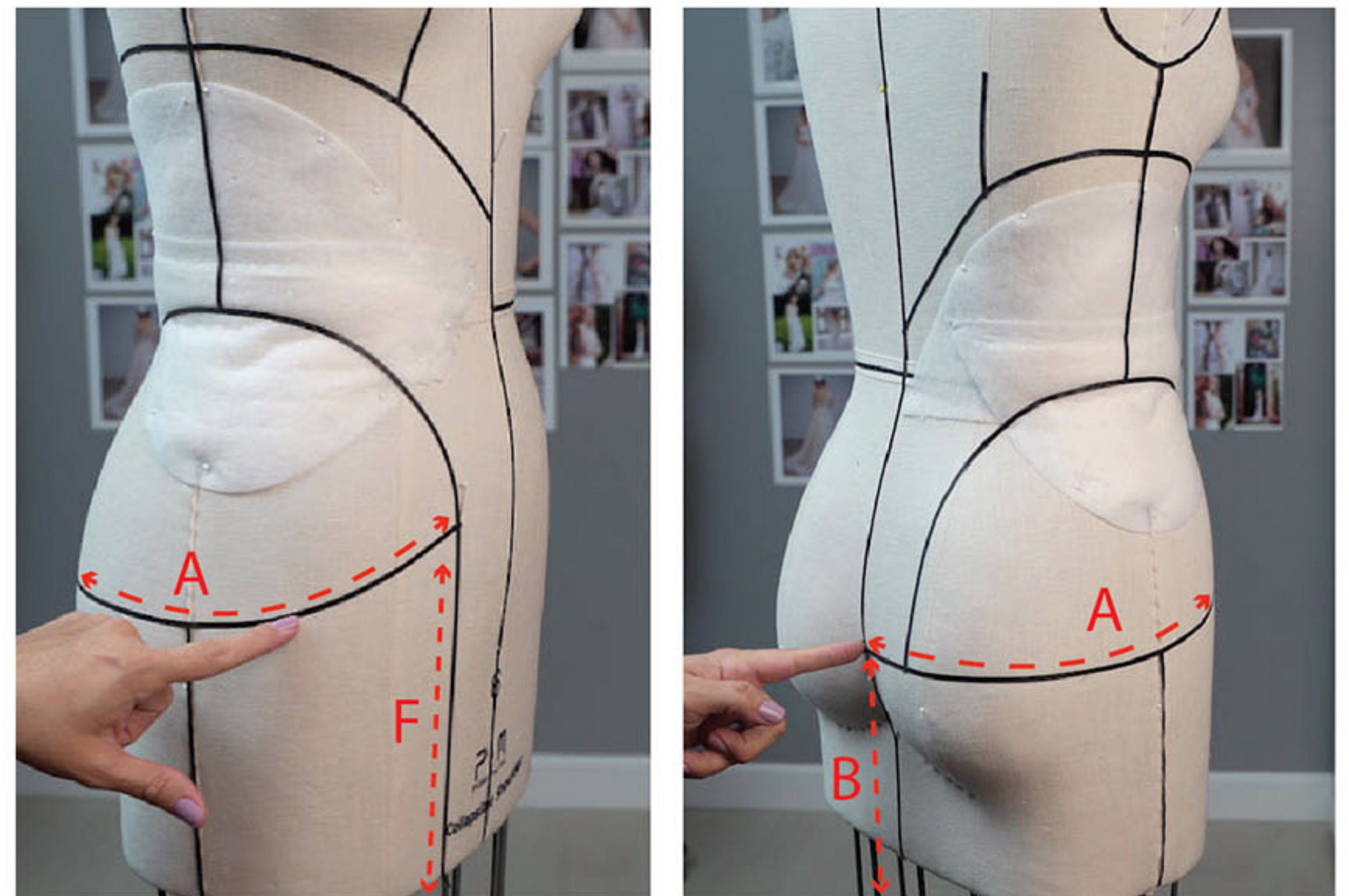


Draw your bias line and straight grain line on your Side hip section muslin, it will help with placement of the muslin on your dress form.

P.S. Bias line should be parallel with your dress form side seam.



P.S: 18" is the Circumference not Diameter.



Tip: Side circle skirt section measurements might vary, you should measure A, Back, and Front lines and if differs, change your measurements. Front and back lines should meet other sections at the hemline. You can keep that measurement little longer and trim your hemline length at the end.